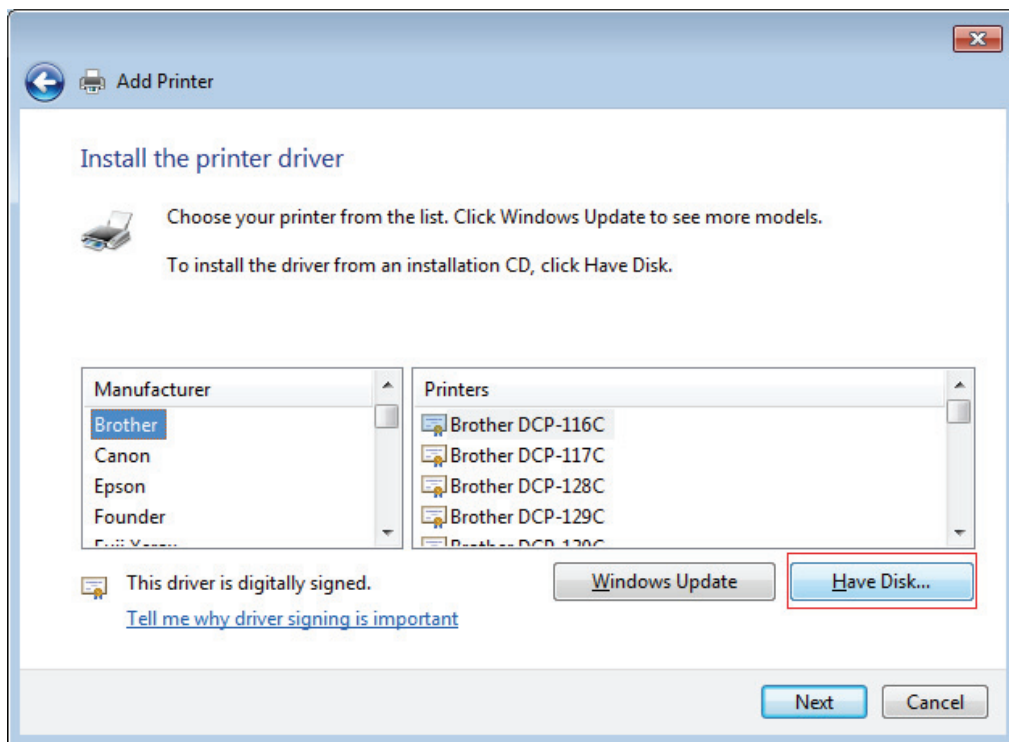


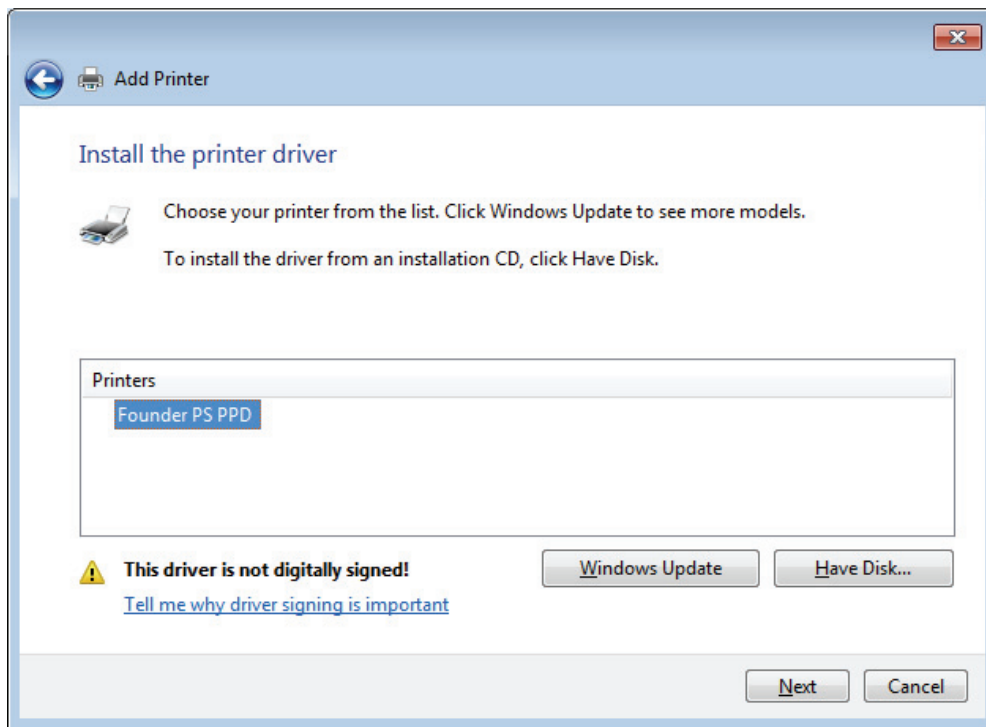
How to install a PostScript Printer Driver on Windows 7

Windows 7 does not provide an appropriate PostScript Printer Driver, if the customer wants to print the layout document to PS file or use NT PIPE method to directly print the layout document to Founder EagleRIP, then please install this PostScript Printer Driver.

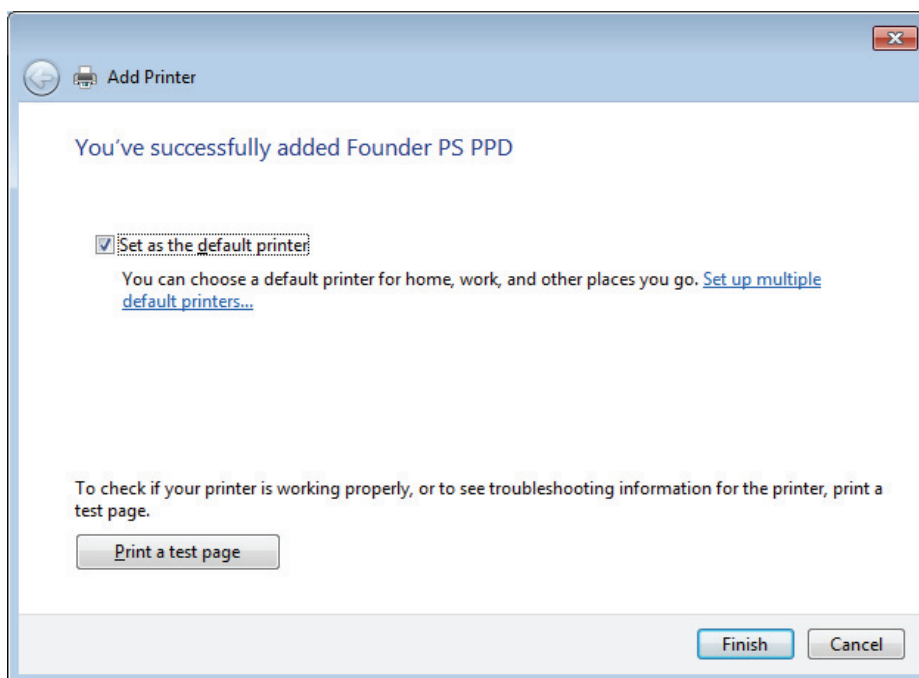
1. Select "Add a printer" from Control Panel on Windows 7.
2. Select "Add a local printer"
3. Select "Have Disk".



4. Specify a folder where FounderPS.inf and PPD file are located.
5. Select the printer "Founder PS PPD".



6. Then a Postscript printer driver is installed.



End